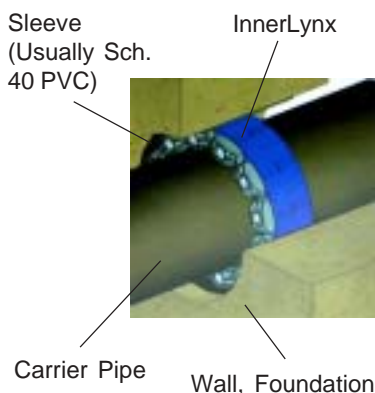




**INNERLYNX®  
MECHANICAL SEALS**

InnerLynx® mechanical seals are made of EPDM rubber, and are suitable for aboveground and direct burial applications. Innerlynx® form a strong hydrostatic seal, and electrically isolate the carrier pipe from the wall sleeve. Made in USA.

**INNERLYNX® MECHANICAL SEALS  
FOR WALL PENETRATIONS**



- Specifications
- Type: Standard "Model C"
  - EPDM Gaskets
  - Temp. Range: 40-250° F
  - Carbon Steel Bolts & Nuts

W-R#	Description	Packed
2625002	IL-200	Belt of 10 links
2625004	IL-275	Belt of 10 links
2625006	IL-300	Belt of 10 links
2625008	IL-315	Belt of 10 links
2625010	IL-340	Belt of 10 links
2625012	IL-400	Belt of 10 links

**INNERLYNX® CONVENIENCE PACKS**

Wal-Rich Innerlynx® Convenience Packs are pre-assembled lengths based on the most commonly used carrier-to-sleeve configurations

IPS	OD
3/4"	1.05"
1"	1.32"
1 1/4"	1.66"
1 1/2"	1.90"
2"	2.375"
3"	3.50"
4"	4.50"

CTS	OD
3/4"	.875
1"	1.125
1 1/4"	1.375

**IPS CARRIER PIPE - IPS SLEEVE**

W-R#	IPS Carrier	Wall Sleeve	Links
2620002	3/4"	3"	4
2620004	1"	3"	4
2620006	1 1/4"	3"	8
2620008	1 1/2"	3"	7
2620010	2"	4"	6
2620012	3"	6"	9
2620014	4"	6"	10
2620016	4"	8"	5

**CTS CARRIER PIPE - IPS SLEEVE**

W-R#	CTS Carrier	Wall Sleeve	Links
2622002	3/4" (7/8"OD)	2"	4
2622004	1" (1 1/8"OD)	3"	4
2622006	1 1/4" (1 3/8"OD)	3"	4